

Commercial Township Lanternfly Survey

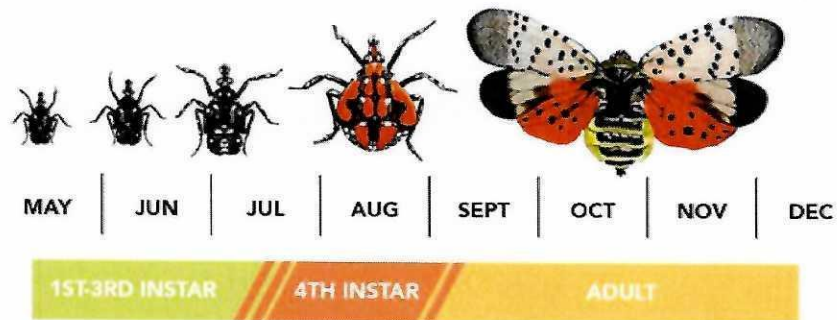
The Spotted Lanternfly (*Lycorma delicatula*) is native to China and was first detected in Pennsylvania in September 2014. Spotted lanternfly feeds on a wide range of fruit, ornamental and woody trees, with Tree-Of-Heaven being one of the preferred hosts. Spotted lanternflies are invasive and can be spread long distances by people who move infested material or items containing egg masses. Juvenile spotted lanternflies, known as nymphs, and adults prefer to feed on the invasive tree of heaven (*Ailanthus altissima*) but also feed on a wide range of crops and plants, including grapes, apples, hops, walnuts, and hardwood trees.

Trees At Risk

- Almonds
- Apples
- Apricots
- Cherries
- Grapes
- Hops
- Maple Trees
- Nectarines
- Oak Trees
- Peaches
- Pine Trees
- Plums
- Poplar Trees
- Sycamore Trees
- Walnut Trees
- Willow Tress

Signs and Symptoms of Spotted Lanternfly

- Plants that ooze or weep and have a fermented odor.
- Buildup of sticky fluid (honeydew) on plants and the ground underneath infested plants.
- Sooty mold on infested plants.



If you have spotted this invasive bug in your yard, please complete the survey below. The Commercial Township has an opportunity for funding to treat infestations of the Spotted Lanternfly but first would like to verify the extent of infestation in our municipality.

Name _____

Address _____

Contact Number _____ Email address _____

When did you first see the Spotted Lanternfly on your property?

How many trees have you seen the Spotted Lanternfly in/on your property?

What type of trees have you witnessed damage to from the Spotted Lanternfly?

Have you tried to kill the Spotted Lanternfly, and were you successful?

If successful, what kind of pesticide did you use?

Has the damage from the Spotted Lanternflies caused irreparable damage to your trees? Explain.

If the Township were to secure funding to treat Spotted Lanternflies, would you be interested?

Please drop off all survey information to either, our drop box on Memorial Avenue, The Clerks Office in the Township Building, email to GHorseman@commercialtwp.com, or mail to

Commercial Township Municipal

1768 Main Street
Port Norris NJ 08349.

Thank you.